

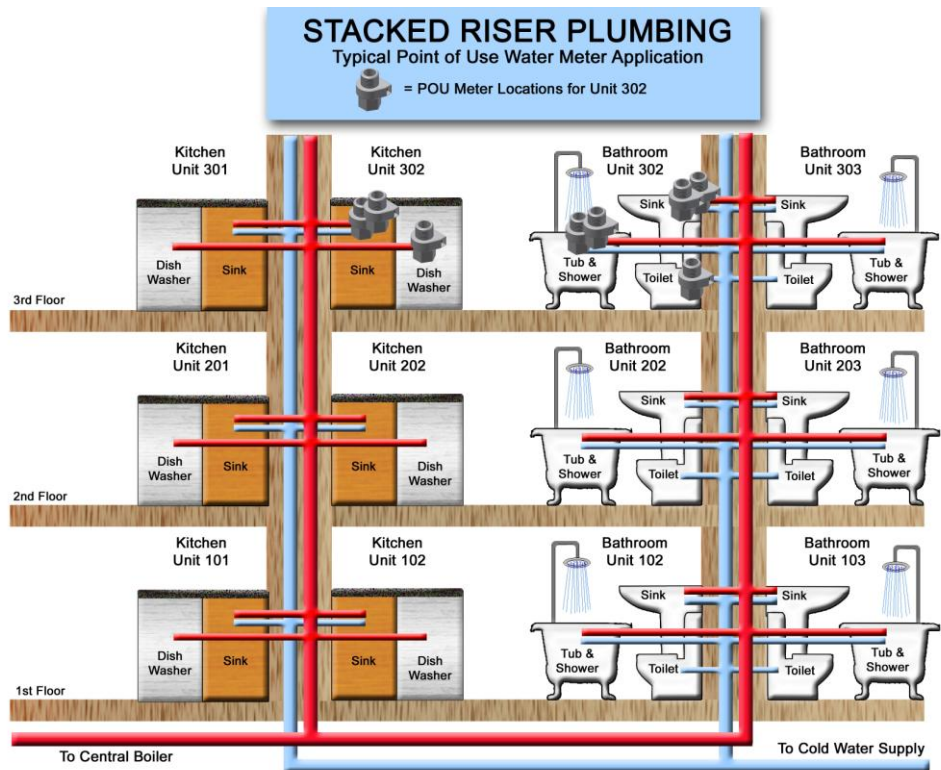


## The MeterLogix Point of Use Overview

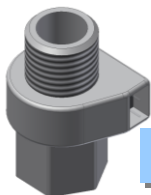
### Are you interested in water submetering... but your property has stacked riser plumbing?

- Over 50% of the multi-family properties use “stacked riser” plumbing for either the hot or cold water sources for each unit as the overall plumbing cost is typically lower.
- **Problem:** This type of plumbing prevents submetering using a standard 3/4” meter.

Typical “Stacked Riser” plumbing configuration where conventional meters are not feasible due to the multiple water pipe feeds entering each unit.



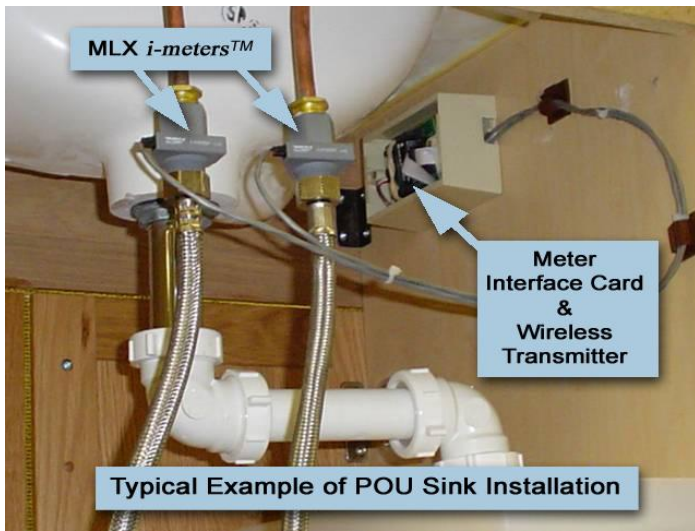
- **Solution:** The good news is that the MLX system allows the submetering of this type of plumbing for any building regardless of the existing plumbing type.



**i-meter™**

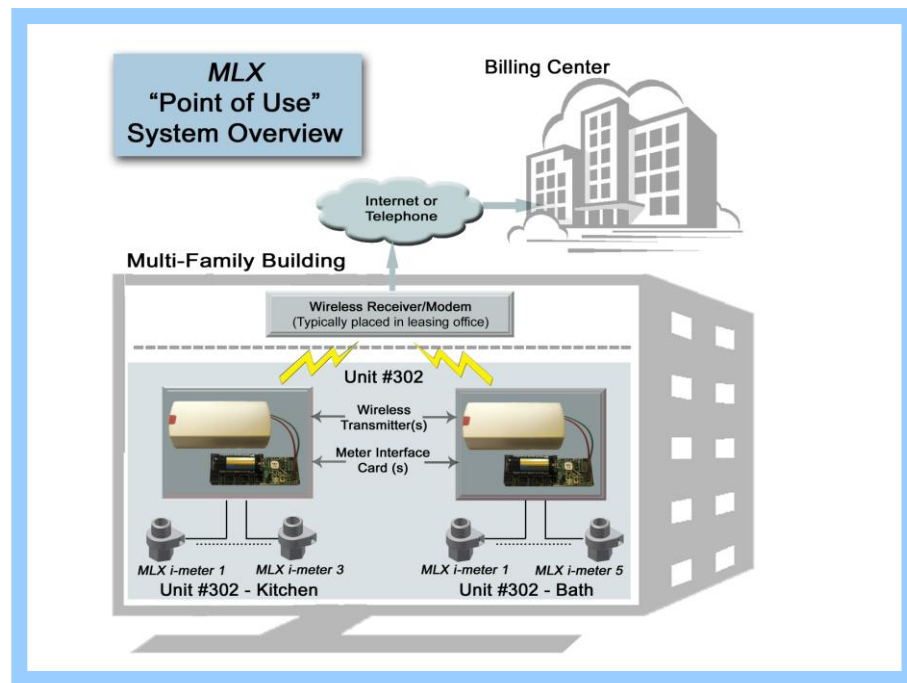
To overcome the obstacle of stack riser plumbing, MeterLogix uses a type of water submetering technology, called “Point of Use” (POU). This solution allows water consumption to be measured at each appliance (sink, toilet, shower, etc) within a resident’s unit.

Meterlogix POU system is designed for multi-family buildings that have a central boiler for domestic hot water or plumbing that has multiple points of water feeds into each unit (hot or cold water). The system consists primarily of the *i-meter*<sup>TM</sup> (a custom designed flow meter) and a custom designed electronic “interface” card which sums the inputs from up to eight (8) *i-meters*<sup>TM</sup>.



### Typical Installation

Submetered properties average a 35% reduction in water usage



Does your property have stack riser plumbing? If yes, we have the solution. Please call MeterLogix at 952-906-2821 for a free install quote.